



**LIONSHEAD**

## **WARRANTY CLAIMS**

Below you will find all that is required for a warranty claim to be processed. All Warranty Claim Forms, corresponding photos, and documents should be sent to Beth Scott at [bscott@lionsheadtireandwheel.com](mailto:bscott@lionsheadtireandwheel.com).

### **Tire Warranty Claims**

- A complete Lionshead Tire and Wheel Warranty Claim Form.
- Photo of each tire's DOT and Date Code
- Photo of each tire's defect
- Photo of each tire's brand and size
- An official document showing the trailer's date of purchase and VIN number

### **Wheel Warranty Claims**

- A complete Lionshead Tire and Wheel Warranty Claim Form
- Wide photo of the wheel that visibly shows the wheel design and tire brand
- Photo of each wheel's defect
- Photo of the back of each wheel showing the required stamps

### **Warranty Contact: Beth Scott**

- Email: [bscott@lionsheadtireandwheel.com](mailto:bscott@lionsheadtireandwheel.com)
- Phone: 574-533-6169
- Fax: 574-533-6761

**\*MUST HAVE ALL REQUIRED DOCUMENTATION TO PROCESS\***

Please fill out the claim form, save the form to your computer and email to [bscott@lionsheadtireandwheel.com](mailto:bscott@lionsheadtireandwheel.com)



**LIONSHEAD**

# Warranty Claim Form

Claim Date: \_\_\_\_\_

Tire Claim  Wheel Claim

Owner of Trailer: \_\_\_\_\_

Trailer Manufacturer and Model: \_\_\_\_\_ VIN#: \_\_\_\_\_

\*Date of Purchase (month/day/year): \_\_\_\_\_ Date of Trailer Mfg: \_\_\_\_\_

## Shipping Information

Residential  Commercial

Name: \_\_\_\_\_

Address: \_\_\_\_\_

City: \_\_\_\_\_

State/Province: \_\_\_\_\_

Postal Code: \_\_\_\_\_

## Reimbursement Information

Payable to: \_\_\_\_\_

Address: \_\_\_\_\_

City: \_\_\_\_\_

State/Province: \_\_\_\_\_

Postal Code: \_\_\_\_\_

## Tire Information

Tire Size: \_\_\_\_\_

Brand: \_\_\_\_\_

Load Range (Ply): \_\_\_\_\_

DOT CODE(S):

One 4 Digit code Per Tire

--	--	--	--	--	--

Date CODE(S):

One 4 Digit code Per Tire

--	--	--	--	--	--

## Wheel Information

Wheel Type: Steel  Aluminum

Wheel Size:  10"  12"  13"  14"  15"  16"  17.5"

Click on/Place a check on One

Wheel Color: Silver

Gunmetal

Black

White

Number of Lugs:  4  5  6  8

Click on/Place a check on One

## Contact Information

Dealer Name: \_\_\_\_\_

Contact Person: \_\_\_\_\_

Dealer Phone: \_\_\_\_\_ Customer Name: \_\_\_\_\_

Dealer Fax: \_\_\_\_\_ Customer Phone: \_\_\_\_\_

Dealer Email: \_\_\_\_\_ Customer Email: \_\_\_\_\_

## Description of Defect:

**\*MUST HAVE ALL REQUIRED DOCUMENTATION TO PROCESS\***



## Tire Claim Photo Requirements

Along with a complete Warranty Claim form, three photographs (per tire) are required for a claim to be processed. We need to have a photograph of the DOT & Date code, the Defect, and the tire brand and size. Below is an example of how these pictures should look. Please send the following photos, along with a complete warranty claim form to Beth Scott at [bscott@lionsheadtireandwheel.com](mailto:bscott@lionsheadtireandwheel.com).

### 1. DOT and Date Code



### 2. Tire Defect



### 3. Brand and Size



**\*MUST HAVE ALL REQUIRED DOCUMENTATION TO PROCESS\***



## Aluminum Wheel Claim Photo Requirements

Along with a complete Warranty Claim for, four photographs (per wheel) are required for a claim to be processed. We need to have a photograph of the wheel that visibly shows the wheel design and tire brand, a photo of each wheel's defect, and a photo of the back of each wheel showing the required stamps. Below is an example of how these pictures should look. Please send the following photos, along with a complete warranty claim form to Beth Scott at [bscott@lionsheadtireandwheel.com](mailto:bscott@lionsheadtireandwheel.com).

### 1. Aluminum Wheel Design



### 2. Aluminum Wheel Defect



### 3. Required Date Stamp



### 4. Required Production Stamp



**\*MUST HAVE ALL REQUIRED DOCUMENTATION TO PROCESS\***



## Steel Wheel Claim Photo Requirements

Along with a complete Warranty Claim for, four photographs (per wheel) are required for a claim to be processed. We need to have a photograph of the wheel that visibly shows the wheel design and tire brand, a photo of each wheel's defect, and a photo of the back of each wheel showing the required stamps. Below is an example of how these pictures should look. Please send the following photos, along with a complete warranty claim form to Beth Scott at [bscott@lionsheadtireandwheel.com](mailto:bscott@lionsheadtireandwheel.com).

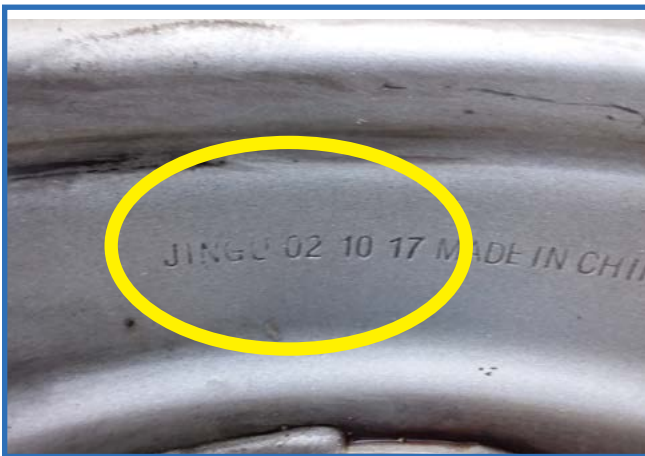
### 1. Steel Wheel Design



### 2. Steel Wheel Defect



### 3. Required Date Stamp



### 4. Required Production Stamp



**\*MUST HAVE ALL REQUIRED DOCUMENTATION TO PROCESS\***