

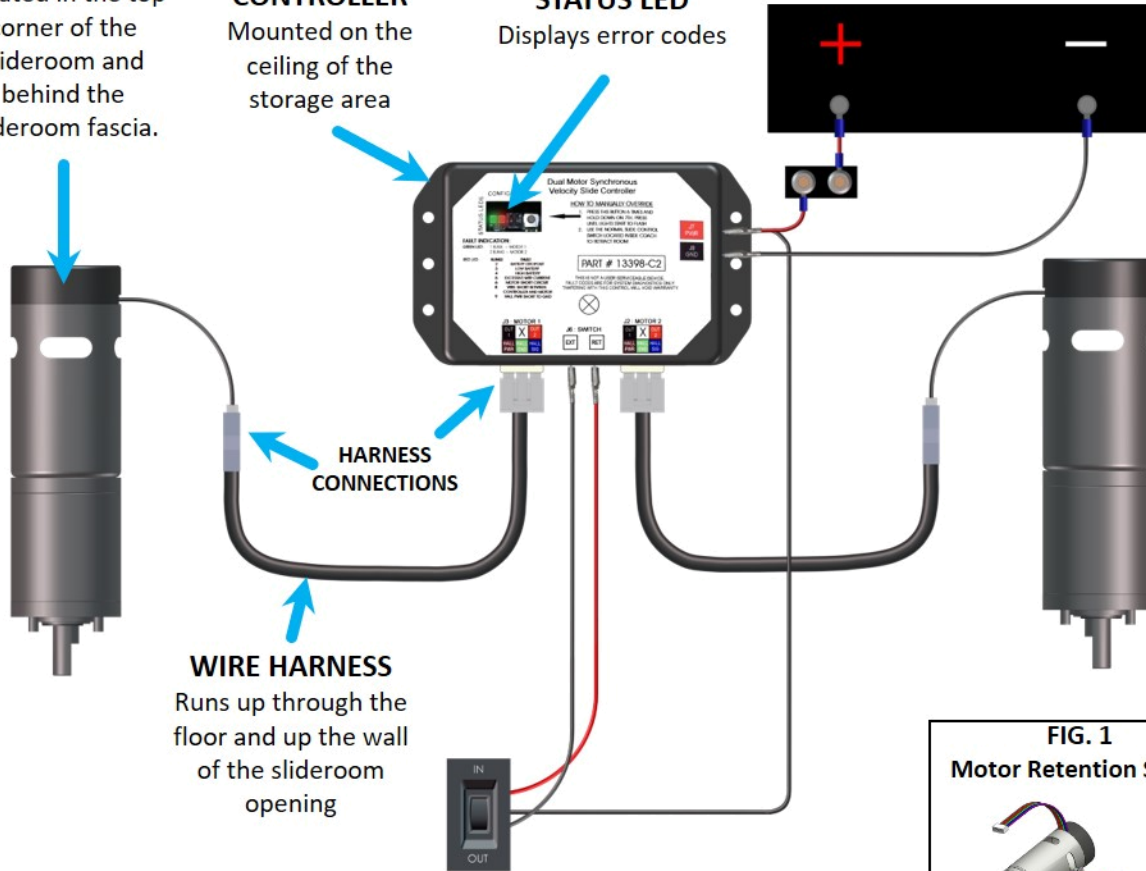


TECH TIP: UNDERSTANDING SHWINTEK ELECTRIC SLIDES

SLIDE MOTOR
Located in the top corner of the slideroom and behind the slideroom fascia.

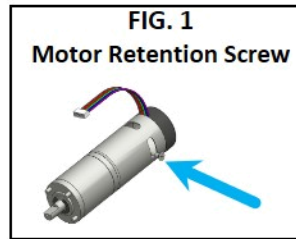
SLIDE CONTROLLER
Mounted on the ceiling of the storage area

STATUS LED
Displays error codes



WIRE HARNESS
Runs up through the floor and up the wall of the slideroom opening

HARNESS CONNECTIONS



Proper Operation of Electric Slides

Press and hold the IN/OUT switch until the room is fully extended/retracted and the motors shut off automatically. Running the rooms partially in/out can lead to the slideout becoming out of sync and needing to be resynchronized as explained below.

Synchronizing the Slide-Out Motors

If the room is not extending/retracting evenly, it can be resynchronized as follows:

1. Fully extend slide room while keeping the switch engaged until the motors shut down on their own.
2. Retract the room 1-2 inches.
3. Repeat steps 1 and 2 until both motors shut down at the same time (Two or three repetitions may be necessary to synchronize the system).

Slide Room Not Opening/Closing Properly

If an error occurs during operation an Error Code will be displayed on the Slide Controller Status LED window. The green LED will blink one time for an error related to motor 1, and two times for motor 2. The red LED will blink from 2-9 times depending on the error code. Error Codes showing 3 and 8 blinks are the most frequently seen and typically simple to troubleshoot (See owners manual for complete list of error codes):

- **Error Code 3 Blinks** - Charge or replace battery
- **Error Code 8 Blinks** - Disconnect, clean and reconnect the harness connections at both the slide motors and slide controller to ensure a solid connection. Visually inspect the exposed harnesses to ensure they are not pinched or damaged.

Manually Retracting Electric Slide Room

If an electric slideroom is stuck open, it can be manually retracted as follows:

1. Remove motor retention screw (See Fig. 1)
2. Pull up motor until disengaged (approx 1/2") and replace the motor retention screw.
3. Repeat this process for both sides of the slide room.
4. Push or pull room back into the opening while keeping the sides relatively even.

WARNING: The room must be travel locked to keep room in place for road travel.